

# For Lease | 2544 NW Upshur St. | Portland, OR



**Available Space: 4,000 SF**

## Property Summary

- Creative office with designer finishes.
- Flexible floor plan.
- Two privates/meeting rooms.
- Large windows & skylights.
- High ceilings, exposed beams & ductwork.
- Dedicated server room.
- Kitchenette with dishwasher.
- Easy walking distance to restaurants
- Five (5) off-street parking spaces.

**Asking Rent  
\$6,500/mo. + NNN's  
(\$19.50/sf/yr)**

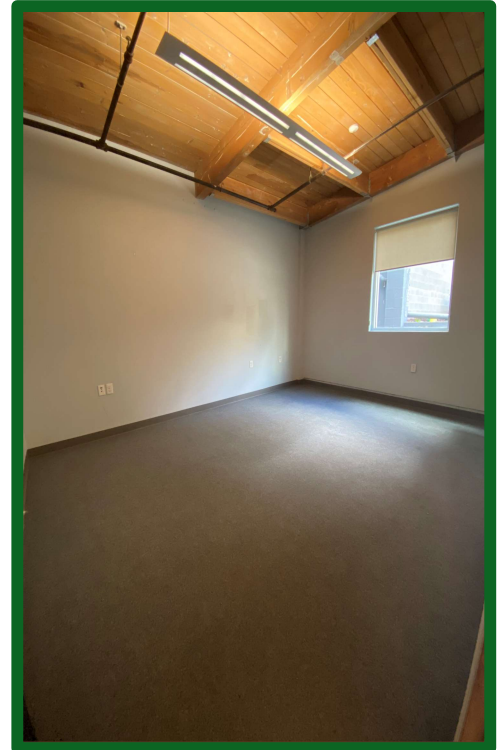
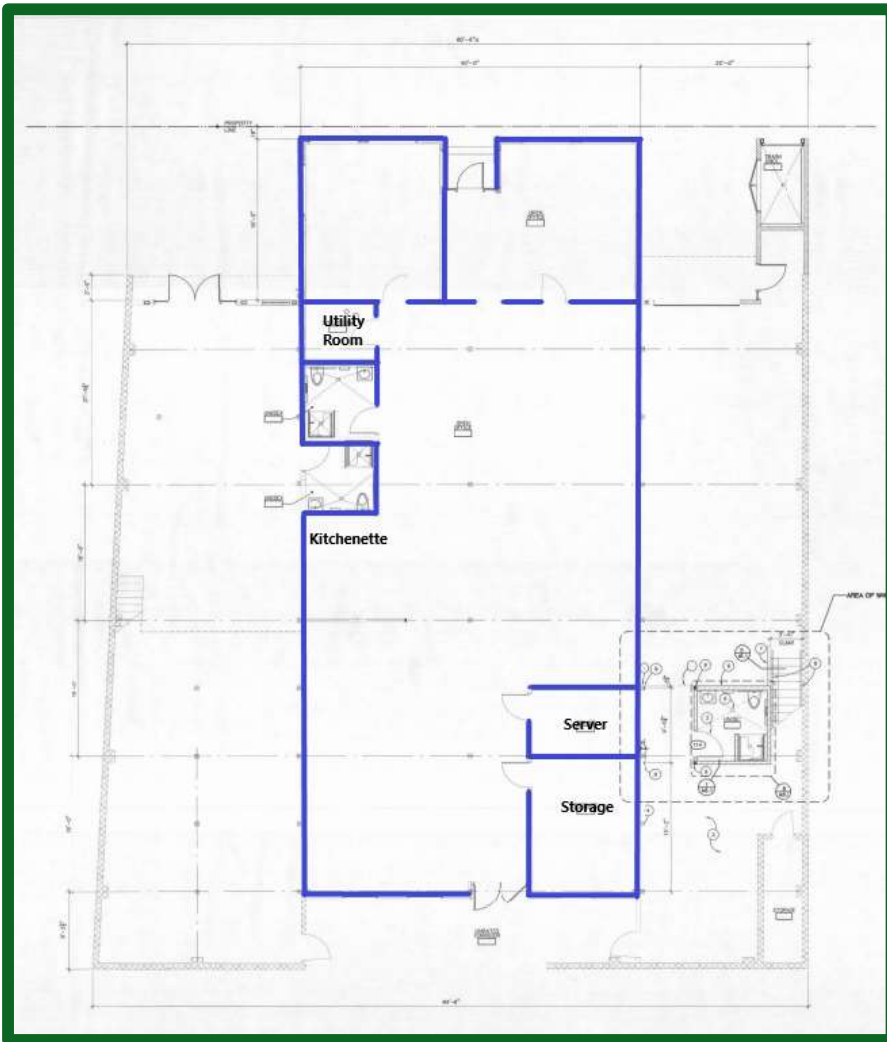
**Contact Scott Wright  
503-335-3300**



**WRIGHT COMMERCIAL**  
REAL ESTATE SERVICES

Although we obtained the information above from sources we believe to be reliable, we make no guarantee about its accuracy. It is submitted subject to the possibility of errors, omissions, change of price, rental or other conditions, prior sale, lease or financing, or withdrawal without notice. You and your legal advisors should conduct your own investigation of the property before transaction.

# 2544 NW Upshur St. | Portland, OR



**WRIGHT COMMERCIAL**  
REAL ESTATE SERVICES

Contact  
Scott Wright  
503-335-3300

Although we obtained the information above from sources we believe to be reliable, we make no guarantee about its accuracy. It is submitted subject to the possibility of errors, omissions, change of price, rental or other conditions, prior sale, lease or financing, or withdrawal without notice. You and your legal advisors should conduct your own investigation of the property before transaction.