

For Lease



WRIGHT COMMERCIAL
REAL ESTATE SERVICES

The Osborn Building

205 SE Grand Ave., Portland, OR.



2nd Floor Office

- 1,650 SF Office
- 1 Large & 2 small private offices
- Conference Room
- Kitchenette
- Elevator served
- Historic Bldg. w/ modern finishes.



Contact

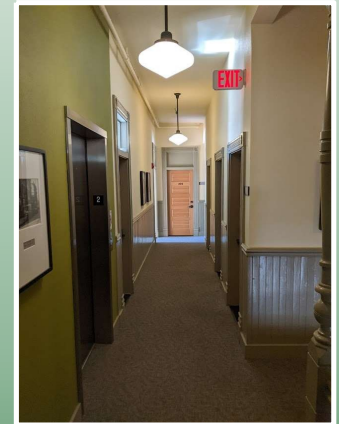
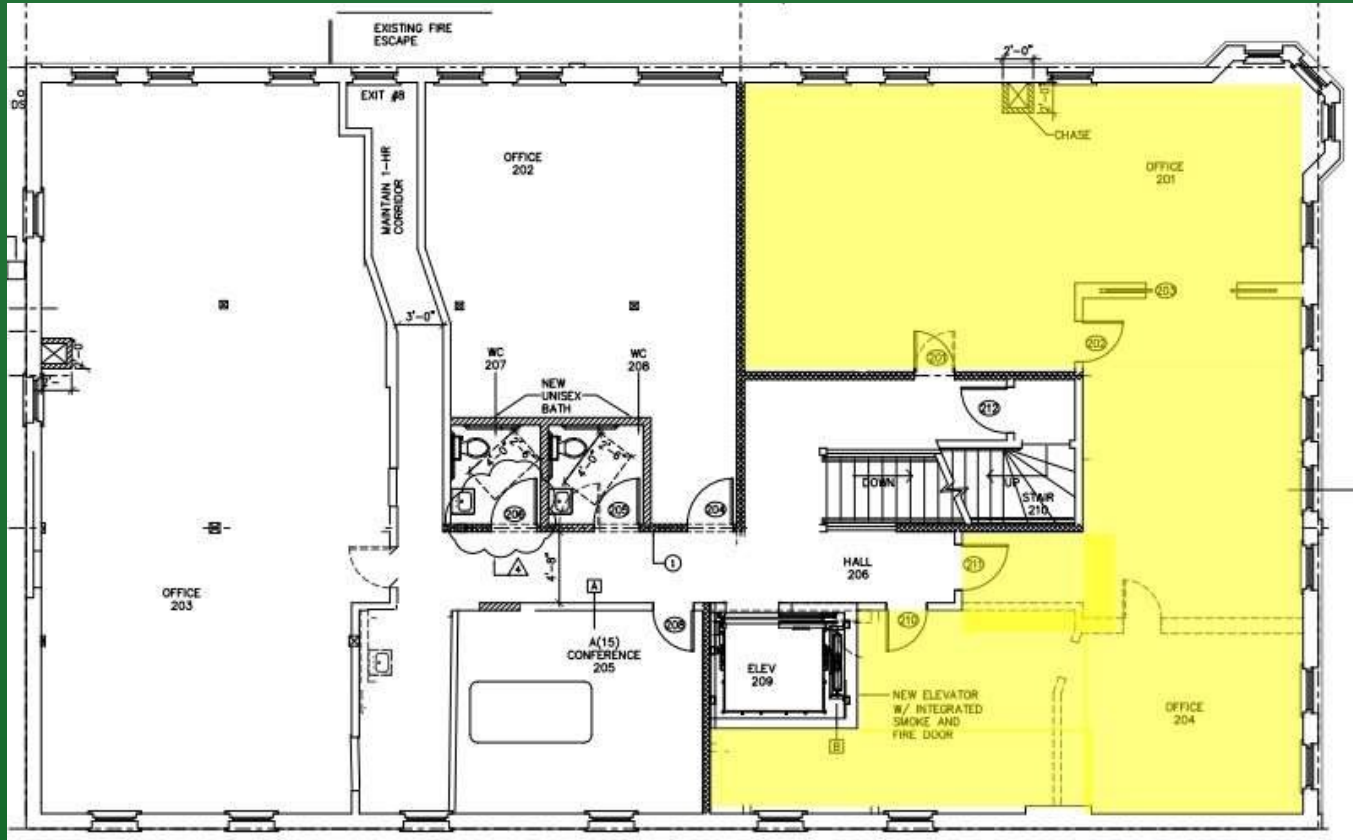
Will Wright

503-335-3300

will@wrightcommercial.com

\$2,956/mo. + NNN's
(\$21.50/sf/yr)

1,650 SF



\$21.50/sf/yr + NNN

Contact:
Will Wright
503-335-3000
will@wrightcommercial.com

Although we obtained the information above from sources we believe to be reliable, we make no guarantee about its accuracy. It is submitted subject to the possibility of errors, omissions, change of price, rental or other conditions, prior sale, lease or financing, or withdrawal without notice. You and your legal advisors should conduct your own investigation of the property before transaction.