

For Sale | 1935 N Argyle St | Portland OR

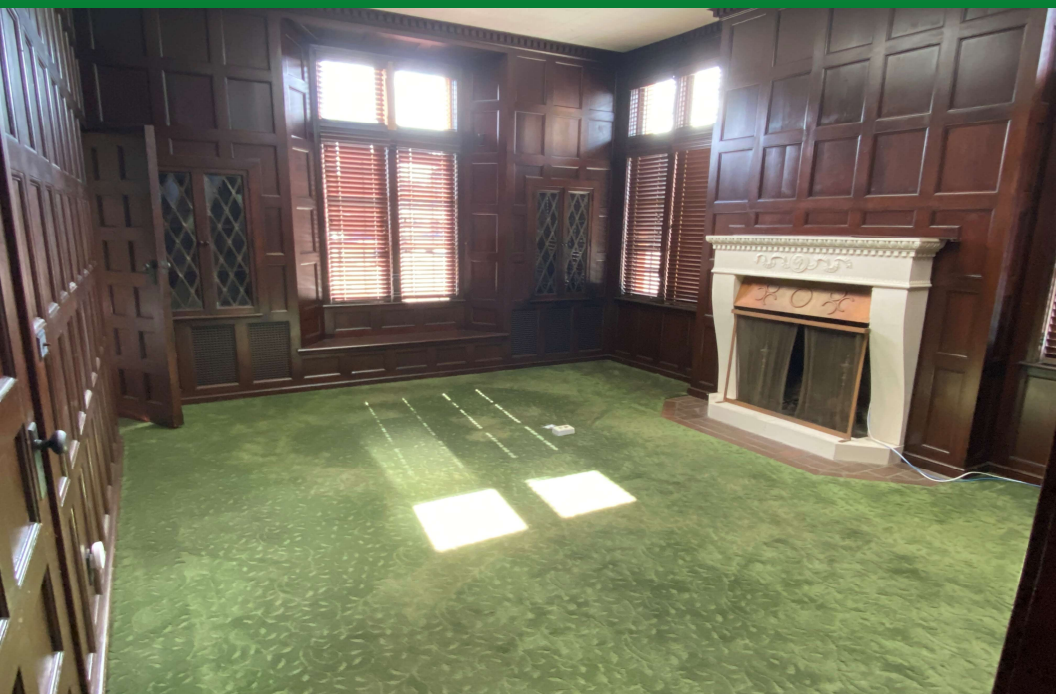
4% Fee to Buyer's RE Broker

9,040 SF Mixed Use - Office, Retail, or Warehouse

(Divisible to 3 potential tenants)

WRIGHT COMMERCIAL
REAL ESTATE SERVICES

Contact Will Wright
503-335-3300
will@wrightcommercial.com



Although we obtained the information above from sources we believe to be reliable, we make no guarantee about its accuracy. It is submitted subject to the possibility of errors, omissions, change of price, rental or other conditions, prior sale, lease or financing, or withdrawal without notice. You and your legal advisors should conduct your own investigation of the property before transaction.



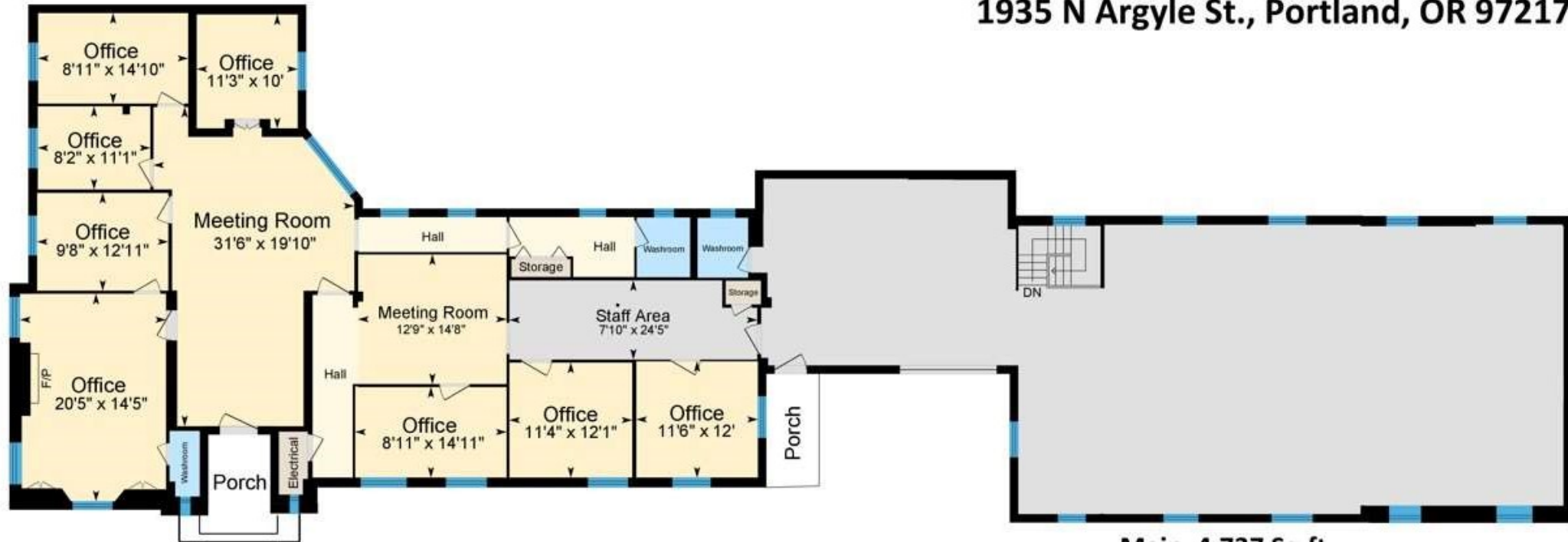
Property Summary

Address:	1935 N Argyle St. Portland OR 97217
Building Size:	9,040 SF
Lot Size:	9,100 SF
Truck Loading	1 Grade Level 1 Dock High
Ceiling Height	8' – 12' clear
Electric Power	+400amp, 240V, 3ph
Lighting	New LED throughout
Zoning	CM2 (Broad range of uses)

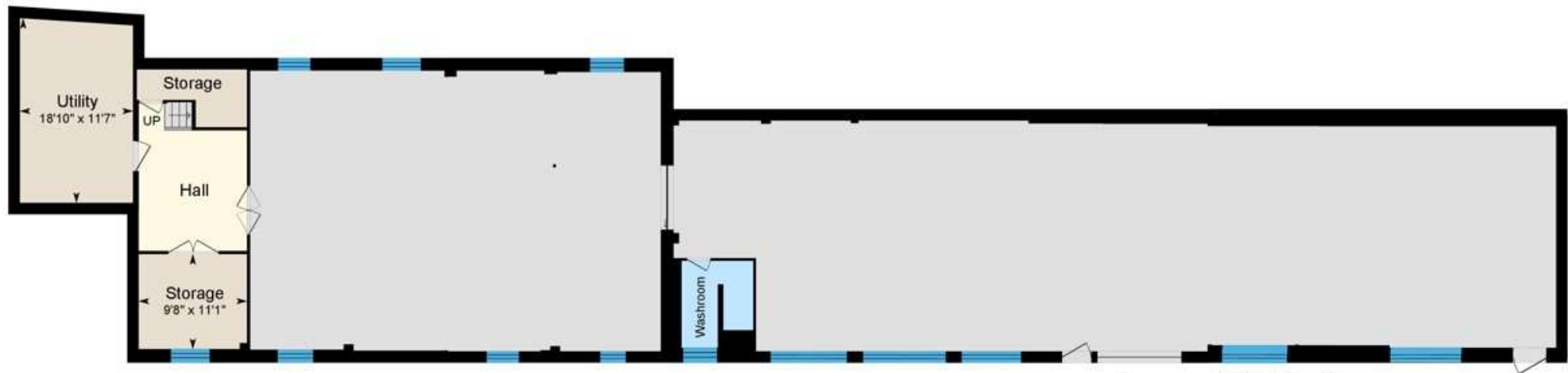
New Price!

\$1,448,200.00 (\$160/sf)

1935 N Argyle St., Portland, OR 97217



Main 4,737 Sq ft



Lower 4,303 Sq ft
(Fin. + Unfin.)

Location



Walk
Score

81

Very Walkable.
Great restaurants along N Denver!



Bike
Score

93

Biker's Paradise.



Transit
Score

80

MAX & Bus Access!
MAX Station across the street.

