

For Lease | 1935 N Argyle St | Portland OR

Only \$0.75/SF/mo. Gross!



4,303 SF Warehouse

Divisible

**WRIGHT COMMERCIAL**  
REAL ESTATE SERVICES

Contact Will Wright  
503-335-3300  
will@wrightcommercial.com

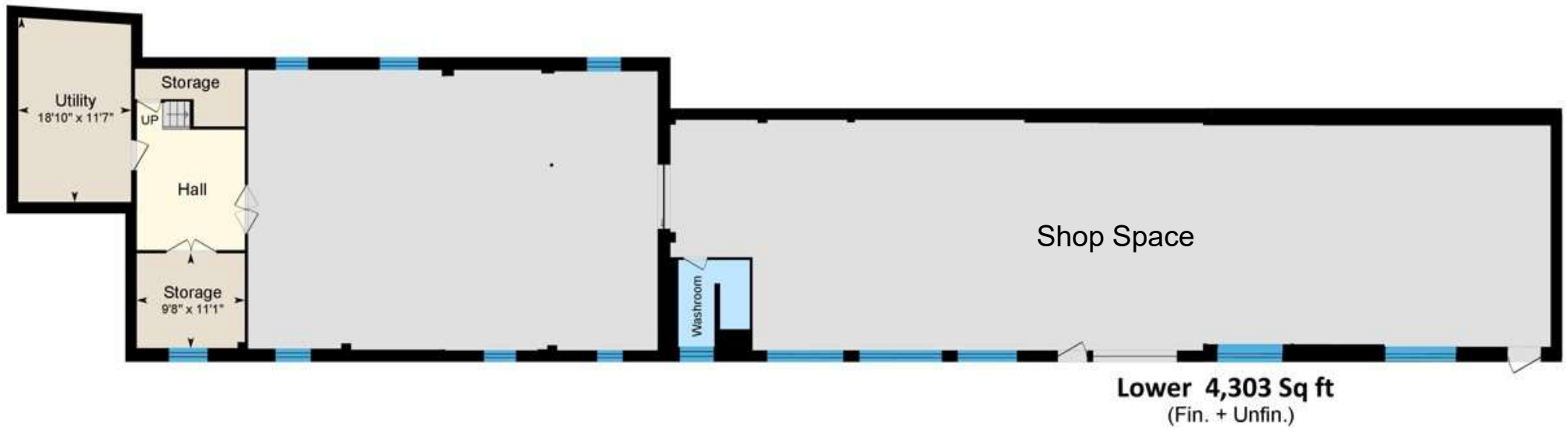


Although we obtained the information above from sources we believe to be reliable, we make no guarantee about its accuracy. It is submitted subject to the possibility of errors, omissions, change of price, rental or other conditions, prior sale, lease or financing, or withdrawal without notice. You and your legal advisors should conduct your own investigation of the property before transaction.

## Property Summary

Address:	1935 N Argyle St. Portland OR 97217
Rentable SF:	1,000 - 4,303 SF Divisible
Lot Size:	9,100 SF
Truck Loading	1 Grade Level
Ceiling Height	8' – 12' clear
Electric Power	+400amp, 240V, 3ph
Lighting	New LED throughout
Zoning	CM2 (Broad range of uses)
Lease Rate	\$0.75/mo./sf Gross \$3,227.25/mo.







**Walk Score** 81 **Very Walkable.**  
Great restaurants along N Denver!



**Bike Score** 93 **Biker's Paradise.**



**Transit Score** 80 **MAX & Bus Access!**  
MAX Station across the street.

