

**FOR
LEASE**



WRIGHT COMMERCIAL
REAL ESTATE SERVICES

The Osborn Building

205 SE Grand Ave., Portland, OR.



2nd Floor Office

- 1,650 SF Office
- 1 Large & 2 small private offices
- Conference Room
- Kitchenette
- Elevator served
- Historic Bldg. w/ modern finishes.



Contact

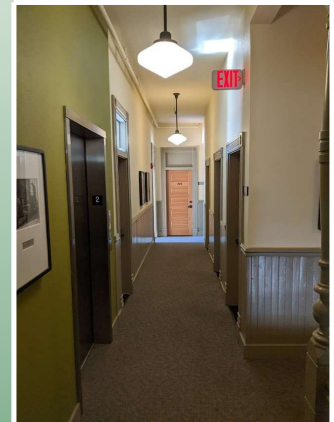
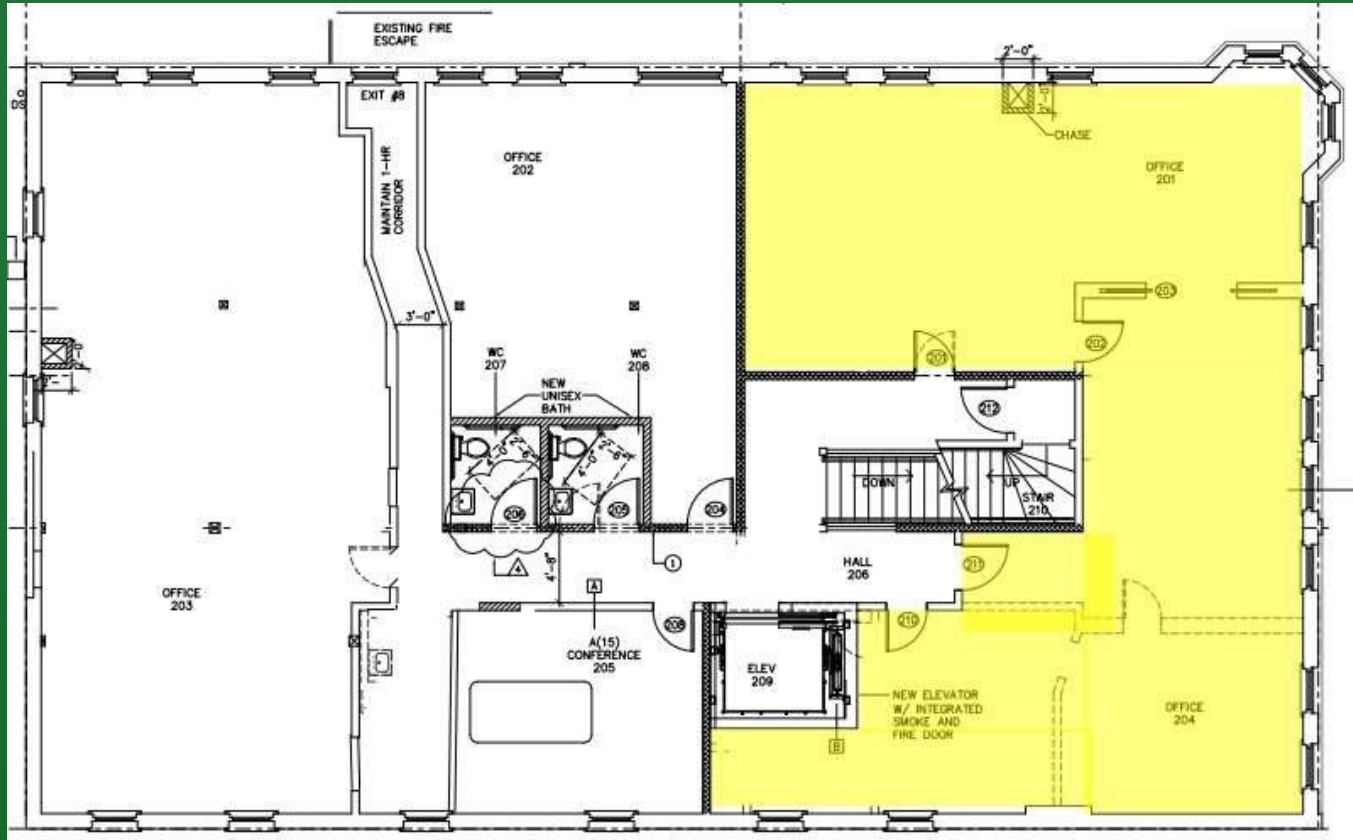
Will Wright

503-335-3300

will@wrightcommercial.com

\$3,200/mo. + NNN's

1,650 SF



\$23.27/SF/YR+NNN

Contact:

Will Wright
503-335-3000

will@wrightcommercial.com