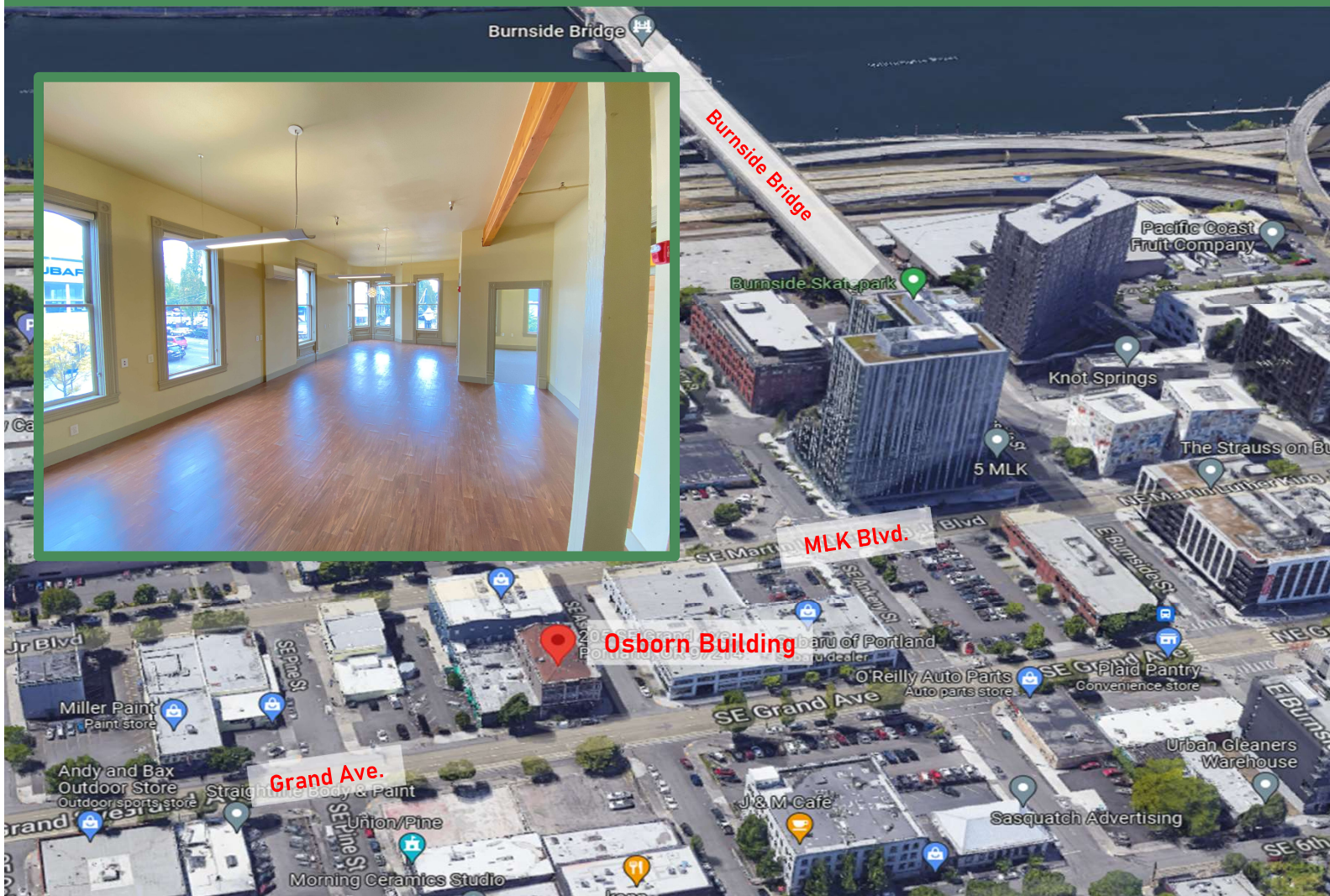


# For Lease | 205 SE Grand Ave. | Portland, OR



## The Osborn Building

### Property Summary

- 2<sup>nd</sup> Floor 1,650 SF Office
- 1 Large & 2 Small private offices
- Conference Room
- Kitchenette
- Elevator served
- Secure Access Entry
- Historic Bldg. w/modern finishes.

### Asking Rent

**\$2,682/Mo.+NNN's**  
**(\$19.50/sf/yr) \***

Contact Will Wright  
503-335-3300

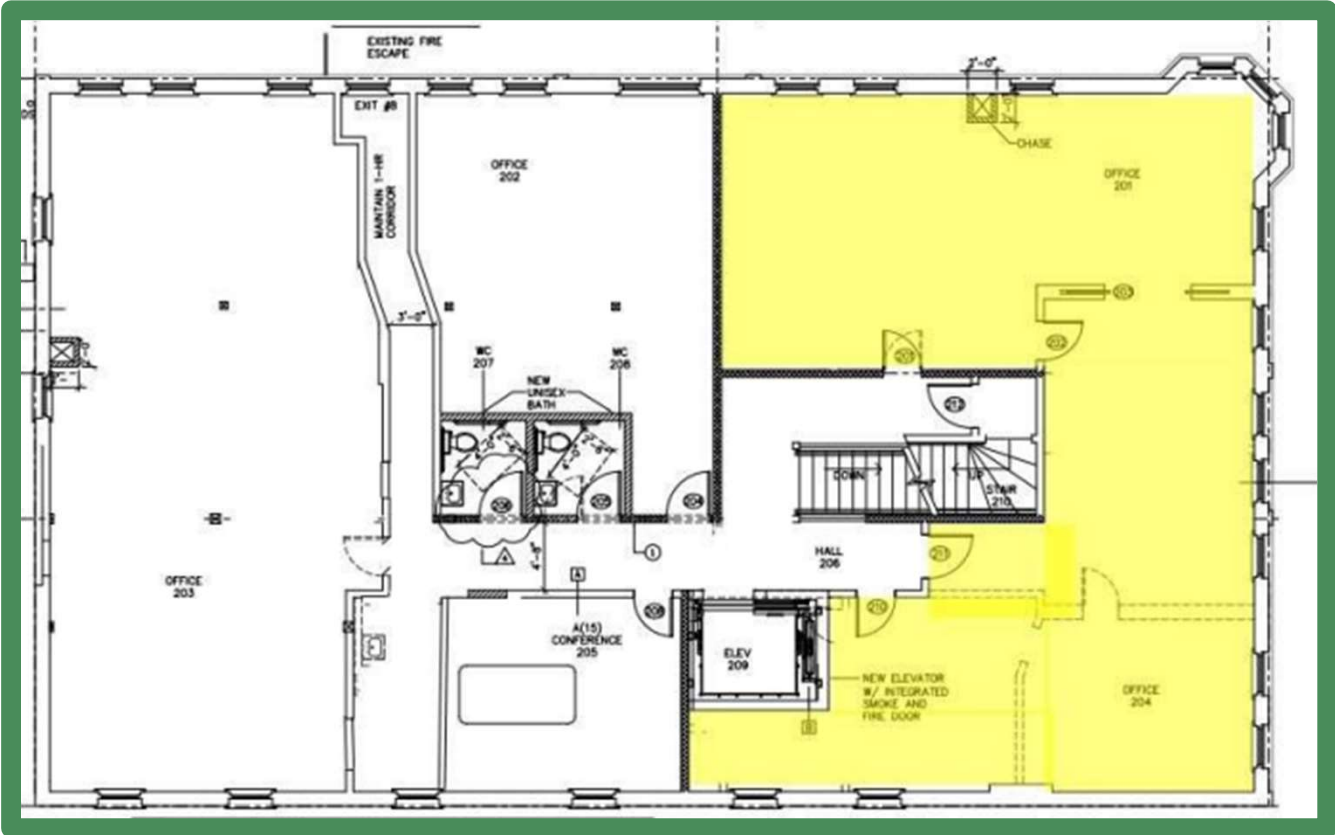


**WRIGHT COMMERCIAL**  
REAL ESTATE SERVICES

**\*Initial 12 months base rent \$16/SF**

Although we obtained the information above from sources we believe to be reliable, we make no guarantee about its accuracy. It is submitted subject to the possibility of errors, omissions, change of price, rental or other conditions, prior sale, lease or financing, or withdrawal without notice. You and your legal advisors should conduct your own investigation of the property before transaction.

# 205 SE Grand Ave.



1,650 SF 2<sup>nd</sup> Floor Office